

THE APPLICATION LIFE CYCLE MANAGEMENT

In earlier days, the time to production of a software was reasonably long, with teams having 12-34 month long development cycles. Today, applications have become a part of daily life, and as such is driving revenue for the business. IT organizations are under pressure to consistently deliver projects and to coordinate a variety of projects combined into large initiatives. Software delivery challenges are increasing as well as the number of projects and the complexity of the applications .

Coordinating across teams and the automation of workflows requires continuous focus on management and governance. Development life cycle tools that don't play well do not ease the pain. It has become crystal clear that efficient coordination and automation of the delivery process requires new collaborative approaches to the planning, measurement, control and reporting of activities. The coordination of development life-cycle activities, including requirements, modeling, development, build, and testing, could be achieved with a Application Life Cycle Management (ALM) discipline through :

- enforcement of processes that span these activities;
- management of relationships between development artifacts used or produced by these activities
- reporting on progress of the development effort as a whole.

ALM is labor-intensive and error-prone without the integration of the tools. These connections take ALM to the next level by improving the efficiency of the Application quality and increasing the costs.

ALM processes yield five principal benefits to the organizations that embrace them:

- **Agility** – Through the collaboration and application of “just enough” processes
- **Predictability** – Through better estimation, beter communication and more repeatable processes
- **Auditability** – Traceability of work back to a business need, accountability for each change or decision made and the ability to separate concerns
- **Quality** – Through more-effective management of requirements, design and quality processes
- **Productivity** – Through the continuous improvement of processes and practices, and more effective utilization of the resources

These benefits result in better control of costs and risks in development projects across the spectrum of applications that run the business, grow the business or transform the business.

Savings also gained from the reduction of unnecessary rework and better alignment of projects with business needs. During the current economic environment, ALM, at its best, can enhance the productivity of teams and provide management with a more accurate view of project status.



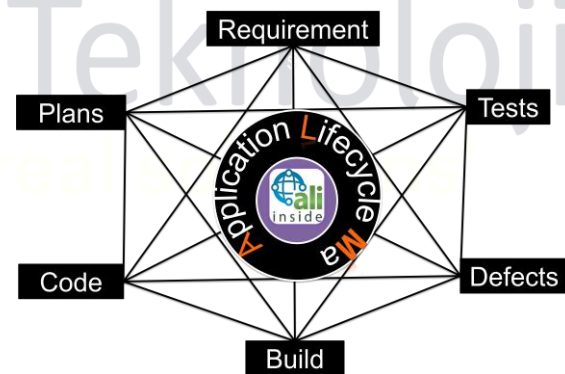
HP ALM AT A GLANCE

HP Application Lifecycle Management (ALM) 11 enables IT staff in multiple roles to manage activities associated with the core application lifecycle, from requirements through development, testing, defect management, and readiness for delivery. Application Lifecycle Management software enables you to manage across functionality, performance, and security—from a single software platform with a unified repository, consistent user experience, and customizable dashboard. ALM 11 also offers traceability of requirements and real-time status through testing, development, and change management.

HP Application Lifecycle Intelligence (ALI) extends the HP ALM platform model with Source Code Management (SCM) and Build Management integration and establishes linkage between ALM Entities (Releases, Requirements, Defects ...), code changes, builds, unit test results and code coverage analysis. This transforms HP ALM into the central system of record that provides information about both business and development activities.

HP ALM is founded on the proven HP Quality Center platform and expands HP

Quality Center Enterprise software with enhanced functionality to address the ALM needs of enterprises from projects to enterprise release trains. HP ALM is ideal for adopting an application center of excellence (COE) approach. HP ALM supports driving consistent processes, shared best-practices and asset sharing across projects, and improves collaboration across business analysts, development and testing teams. Built on a standards-based, easily extended architecture and centralized repository, HP ALM is one of the first unified technology agnostic application delivery systems available now.



IDE INTEGRATION FOR HP ALM ENVIRONMENTS



While ALM is a discipline, it is as well as a product category for many vendors. Each vendor has different story to tell for what their ALM definition is. The reality is that the complete, end to end ALM approach starts with the requirements definition and continues till the project goes live or sometimes even more by helping the retirement of the application. ALM solutions should integrate each of the following independent tools which are essentials to the discipline :

- Requirement analysis and management
- Project Management
- SCM, Source Code Management and Versioning
- Developer-IDE Integration
- Continuous Integration
- Defect, Bug and Issue Tracking
- Test Management and LAB + QA
- Tools for Production Environment (Load, Resource, Security, Availability etc)
- Collaboration

A team member who produces a rich requirements storyboard is different from the developer who produces the source code to implement the story. Each user requires a tool that suits their need .In today's business environment teams in business, development, and operations expected to act as one and must collaborate to provide high-impact software and services to their customers.

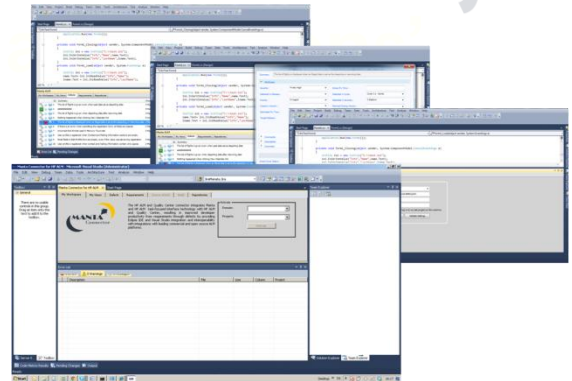
HP ALM with ALI 2.0 extension brings the value of the management of the each step of development processes from the very beginning (development)

till the end (production). Team members gain better understanding into how to approach completing their own work.

MANTA CONNECTOR

Manta Connector is an IDE integration tool for Visual Studio 2008 and Visual Studio 2010 which integrates HP ALM, HP QC and fetches the project requirements and defects related to the particular project or developer.

Manta Connector brings ALM capabilities into the development environment. Developers stick to their IDE, requirement and defect tracking through various tools is history now.



Features:

- **Source Code <-> Requirement or Source Code <-> Defect integration**

These integrations could provide traceability to all developers without a need to know where exactly the code lines are. All it takes a click on the requirement or defect for the developer to reach to the source file. Manta Connector will then

open the related source file and find the related code line on behalf of the developer.

- **Source Code Level Collaboration**

The tagging feature provides commenting capability on source files. Through this feature, developers could add comments to particular requirements or defects to start discussion in the collaboration mode. Compared to other solutions, Manta Connector keeps source level collaboration within an IDE. This improves the traceability of the project without a doubt.

- **Activity Management**

Manta Connector brings visibility to the developer activities. Activation of any defect or requirement is monitored by the Manta Connector and full session of development activity is collected. Top Contributors and the effort spent during the overall project by either developers or project items could be reported in different forms. This feature will update related effort fields automatically on HP ALM or HP QC.

Real Time Development Activity (RTDA) brings a unique functionality into the ALM environments. Real time development activities could be monitored RTDA.

- **Follow the Source - FtS**

Requirements, defects or comments related with the source code or vice versa could be edited easily by the developer. FtS increases the defect or requirement traceability while working on a

source file through linked entities. That would help the developer to decide whether change is needed or not.

- **Cross repository connectivity**

The produced data of different tools used in defect, requirement, bug, issue management etc. could be accessed within a single session of Manta Connector.

Key benefits of



- IDE integration for Microsoft Visual Studio environments
- Transparency in developer activity by calculating the effort automatically
- Real Time Development Activity (RTDA)
- Follow the Source (FtS)
- Visibility in the relationship of the requirement /defect with the source code

About Idea Teknoloji

Idea was founded in 2004 as a result of years of knowledge in studies of large scale service management infrastructure design & implementation.

Today, with 25 consultants, Idea's products are used by more than 60 leader companies of many different sectors including pioneering in Finance, Telecommunication and Retail.

Idea is a ISO 9001 certificated company.



Other Idea Solutions :



A 3rd generation City Surveillance Management System. The system centralises the distributed data (from different sources such as city camera system, police cars, call center etc.) and correlates in one single platform to allow security forces to gain speed and efficiency in preventing the crime with a robust and reduced cost system.



A system developed/designed by Idea to manage Electricity Consumption & Quality. Abstract level representation of overall system against to SCADA based solutions with almost 2 years of ROI.



Electra MPCi is an appliance developed by Idea which helps to collect and correlate various data related to the

devices in use on a remote location components. (security cameras, door events, proximity cards, servers, batteries, heat, humidity, the electrical data etc) HP Service Manager – a worldwide accepted part of the HP software experience - is a component of Electra MPCi as a framework and generates alerts for the situations requires actions to be taken by the energy managers.

Proval

Proval is the Mobile Application for HP Service Manager complements and co-exists with the existing PC browser based HP Service Manager application. HP Service Manager mobile application takes advantage of mobility benefits.

HP Software Solutions :



As a Gold Business Partner of HP Software, Idea, provides software products and consultancy services to align the technology with the needs of business.

- Application Lifecycle Management
- IT Operations
 - IT Service Management
 - Configuration Management
 - Asset Management
 - Business Service Management
- IT Strategy, Planning and Governance
- Information Management